

The biggest  
climate problem  
in agriculture.



**2.0B**

ton CO<sub>2</sub>e / year emitted by  
the world's cows and sheep  
through enteric fermentation

**50%**

of total agricultural emissions  
in **Europe**

**5%**

of total emissions **globally**



**Our company mission is to enable agriculture to reach  
climate targets before 2040.**

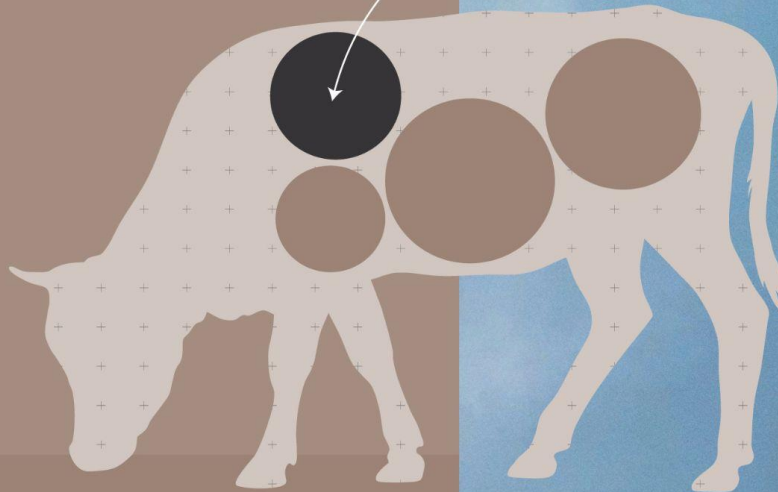
Lome™

# The solution to reach climate targets

- High-performing feed additive reducing methane emissions from cows up to 90%, equivalent to approximately 1 ton CO<sub>2</sub>e per cow per year
- Effortless implementation for farmers
- Direct and measurable impact

1.

A scoop of Lome™ mixed into the daily feed ration



2.

Takes effect immediately on the unwanted microorganisms

3.

Reduces 70-90% of methane emissions per day



4.

Proven safe and good for the planet



Our customers use our feed additives on their journey to achieve climate goals...

coop

Orkla

martin &  
servera

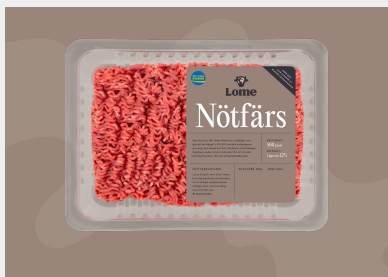
Hemköp

PROTOS

...and we have completed several successful collaborations and projects.



**3 farm trials** with feed additives have been conducted in collaboration with Protos, Coop, Orkla, Martin & Servera, and Hemköp.

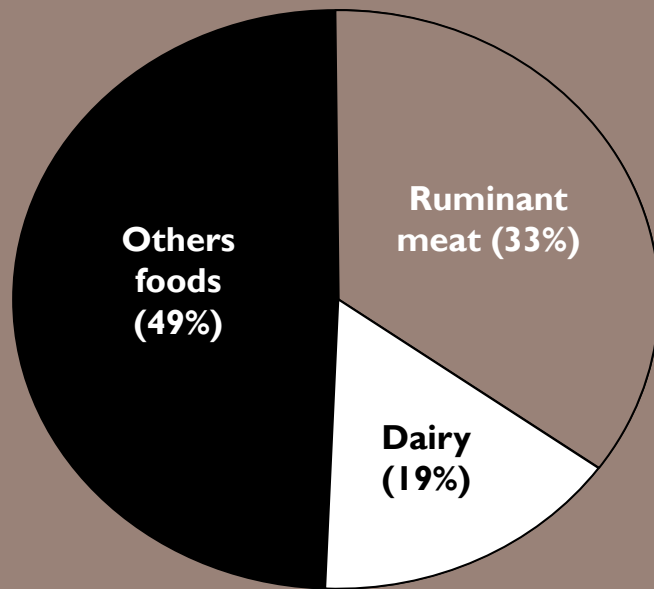


The farm trials resulted in **two successful releases** of Lome beef at Coop and Hemköp.



Lome beef has been served at **Fotografiska Restaurant and Gothia Tower** to create awareness and knowledge about feed additives.

# Emission reduction is direct, easily scalable and will have huge impact



Approximately 50% of the climate impact of beef and dairy is due to enteric methane\*\*

**Projected climate impact of ruminant products relative to total food system GHG emissions 2030\***

\*Ivanovich, C.C., Sun, T., Gordon, D.R. et al. (2023). Future warming from global food consumption. Nature Climate Change

\*\*Naturvårdsverket (2023). Minskade utsläpp av metan and Our World In Data (2020). URL:[ourworldindata.org/carbon-footprint-food-methane](https://ourworldindata.org/carbon-footprint-food-methane)

# Why invest in a Lome STAC?

## 1

Lower the major source of greenhouse emissions in the beef value chain using the **most effective and affordable** solution on the market

## 2

Create and own a **new consumer market segment** as the 'Tesla' or 'Patagonia' of the food industry

## 3

**Future-proof** your company by aligning with **governmental regulation and climate targets**



**To register your interest in investing in this STAC, share your details at [scope3.capital](https://scope3.capital)**